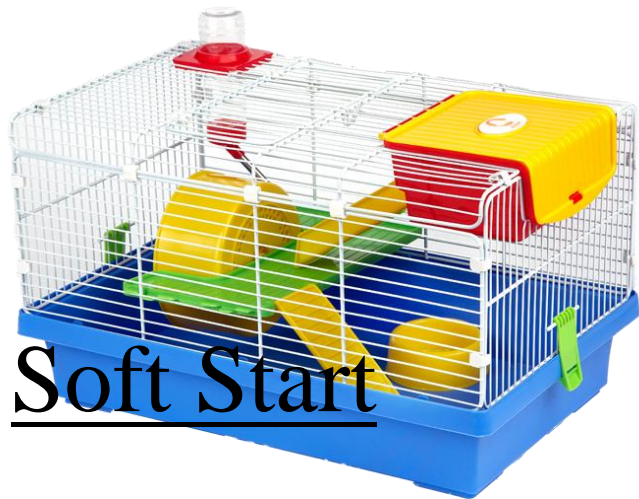


Soft start

Create a cage for the mouse using lego or the big blocks.

Remember- It has to have a front door, upstairs and a place for the mouse to sleep. Your cage also has to be strong enough to withstand a bad storm!



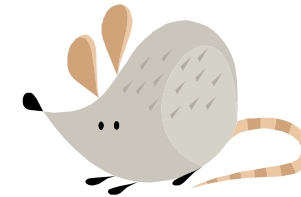
Soft Start

Play dough

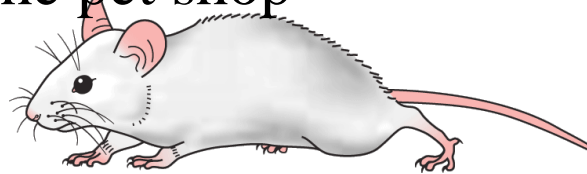
Think of all the different things you can make from 'Happy Mouseday'.
Make these with the play dough.

Here are some suggestions

- The old apple tree
- Tree house
- Nice the mouse
- The mice in the pet shop
- The pet shop



Soft Start



Take turns at being the shop keeper and the customers. Practice counting out the money and giving change to the customers.

Price List

Mice £1.50

Rabbit food 20p

Rabbits £ 3.50

Toys 50p

Dogs £ 5.00

Straw 10p

Soft Start



Use the beep bots to guide the mouse through the maze. Once you have done this make a maze of your own and let your partner guide the bee-bot through it.

